

# THE PASS/CUT/REPLACE SEQUENCE

Diagram 1

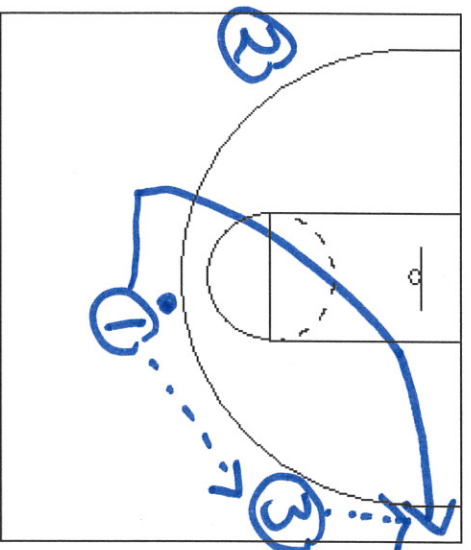


Diagram 1

From our entry plays we can execute the Pass/Cut-Replace sequence. Here ① passes to ③ + cuts to the corner

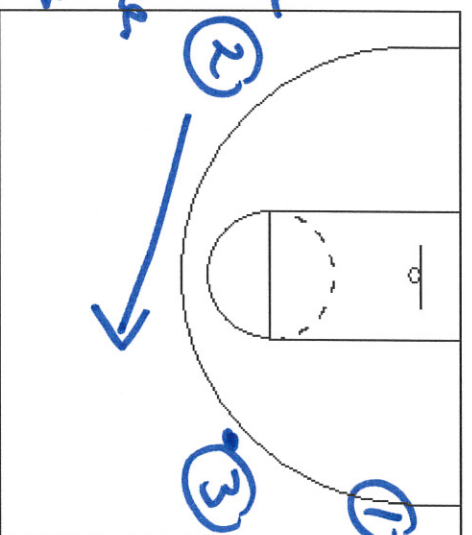


Diagram 2

Diagram 2  
After ① cuts ② replaces ① at the point position. This gives ③ a pass option to either ① or ②.

Diagram 3

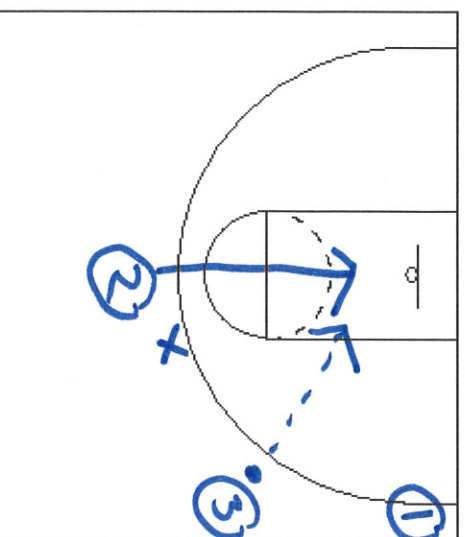


Diagram 3

It when replacing ② is overplayed by his defender ③ signal a back-cut with an over-head pass face. ② the back-cuts

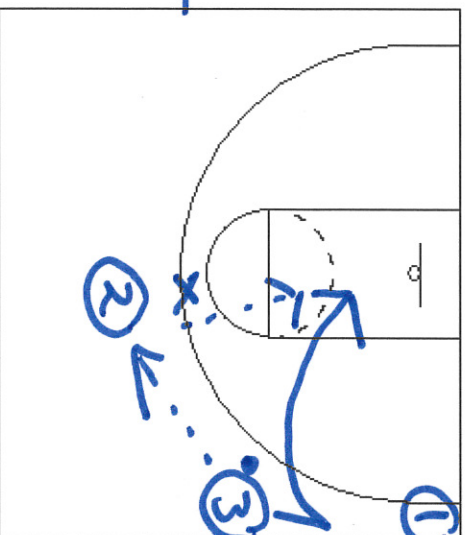


Diagram 4

Diagram 4  
③ can now pass to ② and then ③ cuts.

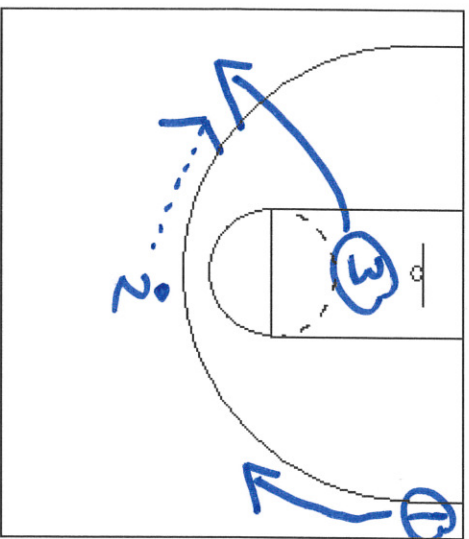


Diagram 1

Diagram 1

If ③ isn't open on the cut they continue to ③ the next vacant space. ① then replaces ③.

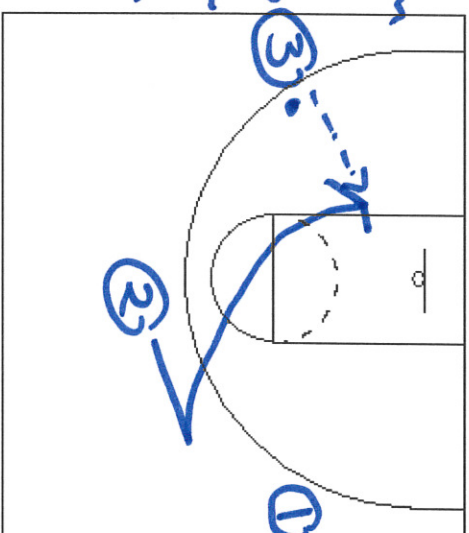


Diagram 2

Diagram 2

② then cuts hard for pass from ③.

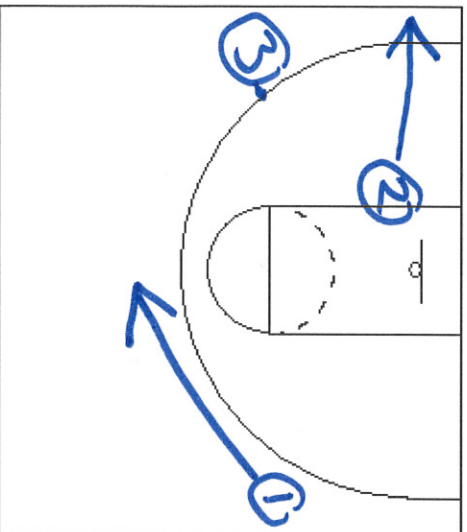


Diagram 3

Diagram 3

① replaces ② at the point-position

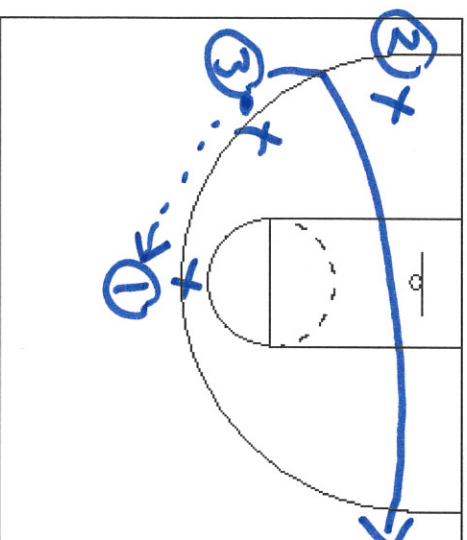


Diagram 4

Diagram 4

③ can then pass to ① and cut.

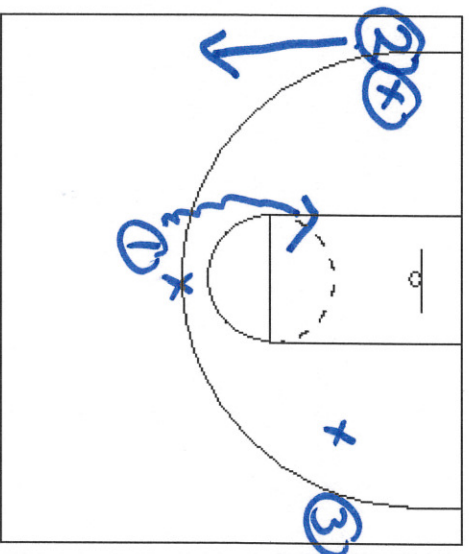


Diagram 1

Diagram 1  
We continue this until we are open on a cut or a driving lane opens up. as shown here.

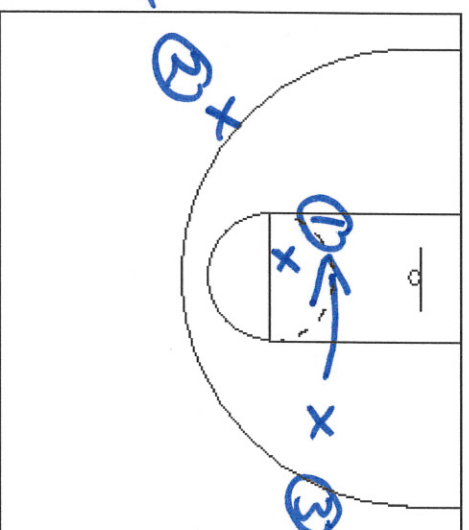


Diagram 2

Diagram 2  
On the drive if 1 draws 3's defender 3 can do two things

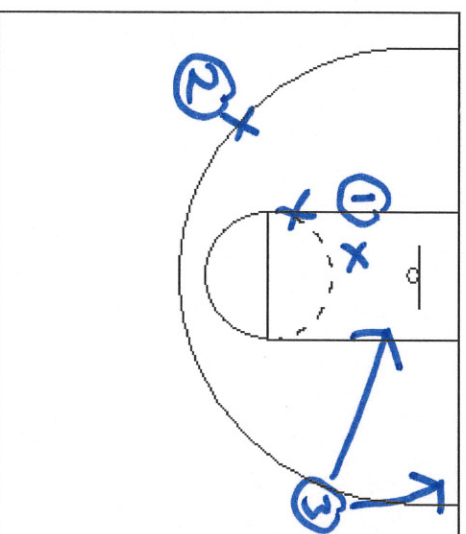


Diagram 3

Diagram 3  
3 can "fade cut" to the baseline. 3 can "step in" for the assist from 1 and the layup

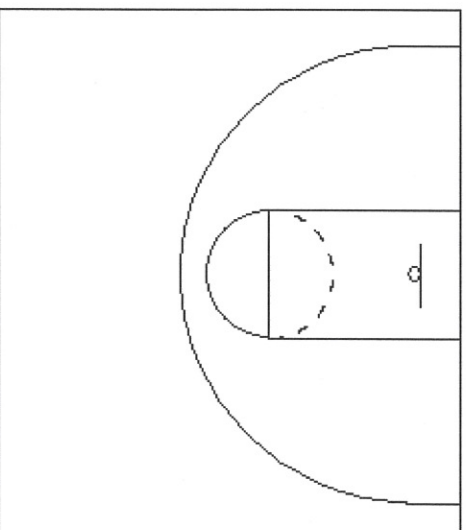


Diagram 4

Diagram 4